

# 1 KOOLANCE COV-RP400 Rev.2.0 Installation Guide v 1.0

The Koolance COV-RP400 is designed for one PMP-400 pump (not included). It can be mounted to a 80-140mm fan grill, if available, using the included bracket.

## Pump Disassembly

The pump must be disassembled for installation. Remove the four screws on the bottom.



Original pump o-ring (required)

Remove the original pump cover. Make sure the original o-ring stays seated on the pump. This o-ring is required for the COV-RP400.



There is a thin o-ring around the edge of the acetal nozzle base. This is to provide additional protection to the pump from external leaks (reservoir overflowing, etc.). This is an optional o-ring and can be removed if desired. MISALIGNED O-RINGS CAN CAUSE LEAKS.

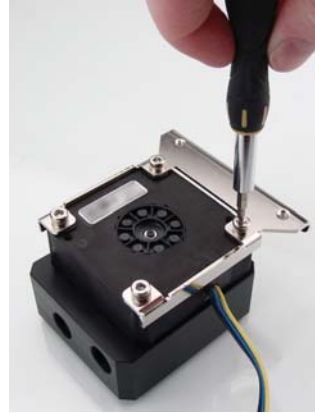


## Pump Installation

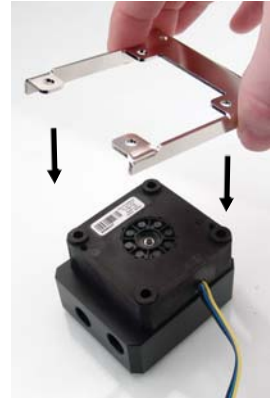
Carefully combine the nozzle base and pump so each o-ring stays properly resting in its groove.



Place the bracket onto the pump in the direction you prefer. Keep in mind that nozzles will be attached to one side of the pump base.



Rubber insulating washers are supplied to reduce noise vibration. These can optionally be installed between the pump and mounting bracket.



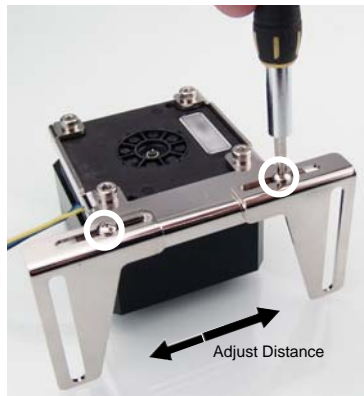
Assemble the mounting bracket to the pump and nozzle base with the four supplied screws.

Begin threading screws by hand and continue with a non-powered driver. Gently tighten screws in a cross-pattern. Do not over-tighten or the nozzle base could become stripped.



If you are using the COV-RP400 mounting bracket, attach the two metal wings to the support bracket using the 2 included screws.

The wing distance can be adjusted to accommodate different fan grill widths (80-140mm).



Use standard chassis fan screws to attach COV-RP400 to a fan. If there is no fan available, any short bolt and nut can be used to attach the COV-RP400 to the chassis fan grill (or onto another area, like a radiator).

## Reservoir Installation



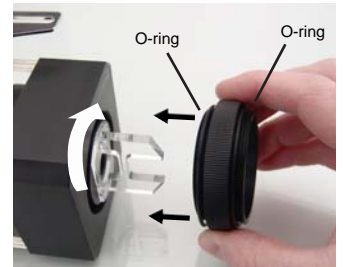
COV-RP400 includes the option to directly mount a reservoir (reservoir components sold separately).

If you are attaching a reservoir, remove the top pump inlet plug.



Attach the acrylic partition with its 2 included plastic screws.

Thread the included reservoir coupler onto the pump base. Make sure both black o-rings are in place and remain aligned while tightening.



Screw the desired reservoir component(s) onto the reservoir coupler. Reservoir components are sold separately.

Gently tighten the reservoir components by hand.

Add your desired nozzles to the inlet and outlet sockets on the side of the COV-RP400.

